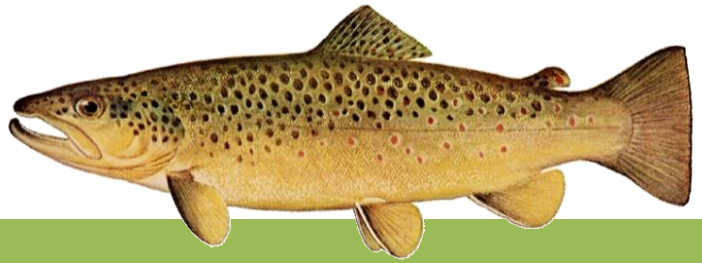


CT DEEP **2019**
FISHING REPORT NUMBER 1
4/18/2019



Brown Trout (*Salmo trutta*)



YOU CAN FIND US DIRECTLY ON FACEBOOK. This page features a variety of information on fishing, hunting, and wildlife watching in Connecticut. The address is www.facebook.com/CTFishandWildlife.

SHARE THE EXPERIENCE
Take someone fishing

INLAND REPORT

OPENING DAY – We would like to get your feedback. Please take our short [Opening Day survey](#).

The warm air temperatures were nice, however, the heavy rain during the morning hours in many locations made early fishing in rivers and streams a challenge. You may have seen our Fisheries staff were out at the nine Trout Parks stocked on Opening Day with many kids helping us stock. Catch percentage was from 60 to 80% at a number of the Trout Parks including Stratton Brook, Black Rock, Kent Falls, Chatfield Hollow, Valley Falls Park, Southford Falls, and Great Hollow. Many other locations, both river and stream as well as lake and pond did not give up their recently stocked trout so easily.

Over 315,000 trout were stocked before Opening Day into nearly 100 lakes and ponds and 130 rivers and streams located throughout Connecticut. DEEP's in-season stockings are now underway with nearly 200,000 additional trout scheduled to be stocked between Opening Day and the end of May.

Get the latest on our Trout Stocking through

- Daily Facebook Posts ([@CTFISHANDWILDLIFE](#))
- Current Stocking Report (on our [webpage](#))
- [Interactive Trout Stocking Map](#)
- See last year's [stocking numbers](#)



Connecticut's Trout & Salmon Stamp: Connecticut implemented a Trout and Salmon Stamp last year. 100% of the revenue from your investment comes to the DEEP Bureau of Natural Resources for Fisheries programs (CGS 26-15, 26-15a, and 26-15b).

The Trout and Salmon Stamp is \$5 for anyone age 18 or older, including those 65 or older, and \$3 for CT residents age 16-17.

The Stamp is required for the harvest (keeping) of trout or salmon.

The Stamp is required to FISH in any waters classified as:

- A Trout Park
- A Trout Management Area (River or stream, not a Trout Management Lake)
- A Wild Trout Management Area, Class 1,2 or 3
- A Broodstock Atlantic Salmon Area

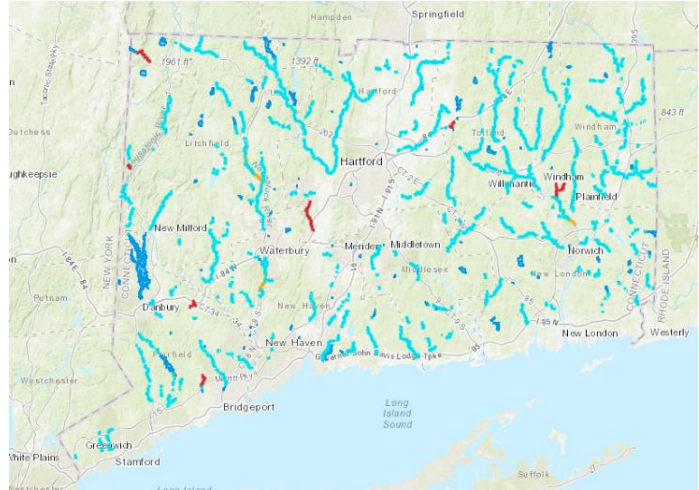
Please take a look at our [FAQ page](#) for more details.

Questions about the Trout and Salmon Stamp may be emailed to deep.inland.fisheries@ct.gov or call us at 860-424-3474

*Providers of some of the information in this report included **Bob's Place, Candlewood Bait & Tackle, Captain Morgan's Bait & Tackle, The Fish Connection, CTFisherman.com**, and a number of bass fishing clubs & organizations.*

TROUT- RIVERS & STREAMS - Conditions will be variable for trout fishing in most areas this weekend. There are plenty of recently stocked trout waiting for anglers and temperatures continue to warm. Currently flows are high (and may be difficult to fish) in a few areas due to the last week's rain (*see stream flow graphic on page 5*) but are closer to typical spring levels in much of the state. However, extensive bouts of rain are forecast for the start of the weekend, especially on Saturday, so flows are expected to increase again over the weekend. Remember that the smaller streams and tributaries will generally drop the quickest. **For real time stream flow data from 68 USGS gauging stations you can check** the following web site: <http://waterdata.usgs.gov/ct/nwis/current/?type=flow>.

Generally mixed reports for Opening Day fishing with some anglers getting their limit or close to it and many others really having to work for their catches. With a rainy start and the higher flows, being willing to try different locations was helpful. In general, early morning was tough but fishing improved by late morning in most areas with reports from the Hammonasset River (steady all day, worms, beadheads, wooly buggers, some dries all working), Yantic River (some catches, but much better the next day), Little River, Blackledge River (good day here for anglers), Salmon River, Natchaug River lots of reports for fair to good fishing last weekend, especially on Sunday), Fenton River (slow start, improved late morning), Fivemile River (Putnam, Killingly, fairly good action with some nice-sized catches reported), Mill river (Hamden, fair action), Mianus River (good mid-morning for anglers), Rippowam River (tough fishing), Norwalk River (slow at first, but got better), East Aspetuck River (fair action), Naugatuck River, Housatonic River (some good action before flows really jumped up), and West Branch Farmington River (also good until flows from the Still River skyrocketed).



INTERACTIVE TROUT STOCKING MAP

Anglers can see the number of days since our last trout stocking by using our interactive trout stocking map (www.ct.gov/deep/troutstockingmap). Give it a go.

Farmington River - Opening Day trout fishing was variable. Below the Still River fishing was good for fly anglers early but tough later after flows rose. Fishing was also good at the Riverton derby with a number of the big fish caught. West Branch flows are on the high side currently, 902 CFS at Riverton plus an additional 261 CFS from the Still River. Conditions may be difficult for the upcoming weekend with rain in the forecast for Saturday expected to add to the current moderately high flows. Anglers will have to work some for their fish.

Typical mid-April hatches/patterns include Blue Wing Olive, Hendrickson (will appear mid-April when it warms up a bit), Winter/Summer Caddis, Stonefly nymphs, Midge and Blue Quill. Nymphs (#18-22) are always a good go-to fly, try Bead Head, Midge Pupa, Brassie, Zebra Midge or Copper John patterns. Streamers are also a good option (White Zonkers & Buggers (#4-12) as well as Muddlers, Mickey Finn, Grey or Black Ghost).

Housatonic River - Fishing has been good when flows during those times when flows have moderated some however conditions for the weekend may again be difficult. Flows have been dropping to fishable levels, currently 2,600 CFS at Falls Village and 3,870 CFS at Gaylordsville but rain that may raise the river again is in the forecast. Anglers should call the **FirstLight Power Resources flow line at 1-888-417-4837 for updated river information or check the USGS website at <http://waterdata.usgs.gov/ct/nwis/current/?type=flow>** for up to

date real time streamflow data from a number of USGS gauging stations including two on the upper Housatonic River.

Hatches/patterns. Typical patterns for mid-April include March Brown (#10-12), Pheasant Tail (#12-18), Stoneflies (#6-10), Pheasant Tails (#14-20), and Black Stoneflies (#18-22). Look for Hendriksons soon. Nymphing (try Bead Head, Midge Pupa or Copper Johns) and streamers (such as White/Yellow Zonkers or Woolly Buggers) are good options.

TROUT- LAKES & PONDS – It appears that weather kept many anglers home early on opening Day, but reports suggest that anglers were finding fish. Fair to good reports from Quonnipaug Lake (nice action reported), Amos Lake, Long Pond, Beach Pond, Walkers Reservoir (fair to good early, slowed later in the morning), Lake McDonough (good for one trolling at 4-6 feet), East Twin Lake, Ball Pond (slow early, better latter), Squantz Pond and West Hill Pond.

Fishing at the Trout Parks was also generally fair to good with the best reports from Wharton Brook, Chatfield Hollow, and Mohegan Park Pond and fair reports from Valley Falls Park Pond and Stratton Brook.

TROUT- Stocking update for the week of 4/15 – 4/18. Note that stockings can also be found in our [current stocking report](#) or by using the [interactive trout stocking map](#).

LAKES AND PONDS:

- In **eastern Connecticut**; Amos Lake, Beach Pond, Long Pond, Wauregan Reservoir, Wyassup Lake, Angus Park Pond, Bigelow Pond, Mashapaug Lake, Black Pond (Woodstock), Gay City Pond, Gardner Lake, Horse Pond, Higganum Reservoir, Rogers Lake, Uncas Lake, Long Pond, Walker's Reservoir, Beaver Brook Park Ponds, Broad Brook Mill Pond, Somersville Mill Pond, Quonnipaug Lake, Lake Saltonstall, Branford Supply Pond, Green Falls Reservoir, Hewitt Fly Pond, Cedar Lake, Shenipsit Lake, Coventry Lake (Wangumbaug Lake), Hanover Reservoir, Pattaconk Lake and Bashan Lake were stocked.
- In **western Connecticut**; Colebrook River Lake, Highland Lake, Westside Pond, Scoville Reservoir, Ball Pond, Lake McDonough, Hop Brook Lake, Mad River Flood Control Impoundment and Black Rock Lake were stocked.

RIVERS AND STREAMS:

- In **western Connecticut**; the Shepaug River, East Aspetuck River, Pond Brook, the lower Pottatuck River, Mad River, Mill River (Fairfield, outside the TMA), Wepawaug River, Blackberry River and Whiting River were stocked.

TROUT PARKS: the Valley Falls, Black Rock (pond & brook), Kent Falls, Southford Falls (pond & brook), Wolfe Park (Great Hollow Pond), Stratton Brook (pond only), Chatfield Hollow (Schreeder Pond only), Day Pond, Mohegan Park Pond, and Pasture Pond Trout Parks were stocked.

COMMUNITY FISHING WATERS: Center Springs Park Pond and Freshwater Pond were stocked.

LARGEMOUTH BASS fishing is generally slow in many areas, but action should begin to pick up as water temperatures warm. Some better action reported from Highland Lake and Lake McDonough. Targeting dark bottom warmer back water coves is suggested for some action. **Tournament angler** reports are from Amos Lake (slow, 4.61 lb lunker), Pachaug Pond (fair, 4.30 lb lunker), and Pattagansett Lake (slow to fair, 4.9 lb lunker).

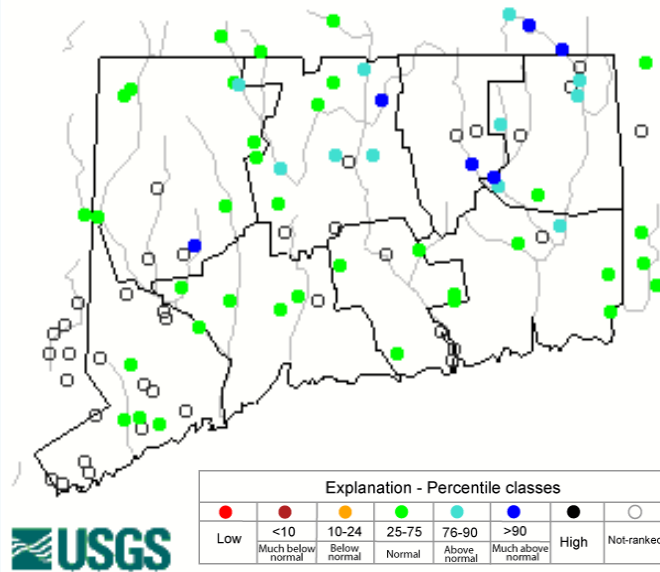
SMALLMOUTH BASS. Smallmouth are being caught at Candlewood Lake and Lake Lillinonah. **Tournament angler** reports are from Candlewood Lake (great bags for the first tournaments this season, including four bags over 20 lbs).

CATFISH. An 8-lb Channel catfish was caught (and released) at Quonnipaug Lake.

CONNECTICUT RIVER. The Connecticut River is cranking with the spring runoff from the upper river. It is cold and turbid, at 80,000 CFS at Thompsonville.

Stream flow conditions

Thursday, April 18, 2019 10:30ET



Data in the state graphic to the left are generated by the United States Geologic Survey (USGS) and are available on line at: <http://waterdata.usgs.gov/ct/nwis/rt> A percentile is a value on a scale of one hundred that indicates the percent of data in the data set equal to or below it. For example streamflow greater than the 75th percentile means only ¼ of the streamflow values were above the value and thus would be considered “above normal”. Stream flow between the 25th and 50th are considered to be “normal flows” and those 25th or less are considered to be “below normal”.

NOTES & NOTICES:

STORM DAMAGE REMINDER. Due to damage from storms in May, Sleeping Giant State Park (including the Sleeping Giant TMA) remains closed and was not stocked with trout this spring.

CONNECTICUT RIVER (invasive species alert). In 2016 hydrilla was found in the main stem Connecticut River in Glastonbury (near Glastonbury’s Riverfront Park & Boathouse). **Hydrilla has now spread throughout the river and can be found in numerous areas.** See the Coventry Lake entry on the next page for what river users should do to prevent spread of this invasive plant to other waterbodies.

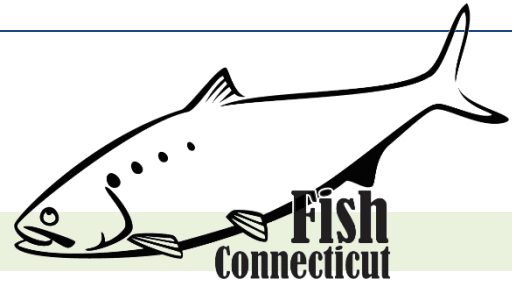
COVENTRY LAKE (invasive species alert). Hydrilla, a very highly invasive aquatic plant, has been found growing in Coventry Lake. All lake users should take extra care to check and clean their boats (including canoes, kayaks and rowing sculls), trailers, and fishing equipment before leaving the boat launch, or leaving the lakeshore.

Known Hydrilla Infestations (Spring 2018)



Known locations of hydrilla at Coventry Lake (Wangumbaug Lake). Boaters should avoid these areas noted with red to avoid fragmenting and spreading hydrilla.

The Connecticut Department of Energy and Environmental Protection is an Affirmative Action/Equal Opportunity Employer that is committed to complying with the requirements of the Americans with Disabilities Act. Please contact us at (860) 418-5910 or deep.accommodations@ct.gov if you have a disability and need a communication aid or service; have limited proficiency in English and may need information in another language; or if you wish to file an ADA or Title VI discrimination complaint.



MARINE FISHING REPORT

Surface water temperatures in Long Island Sound (LIS) are in the upper 40's to 50 °F. Check out the following web sites for more detailed water temperatures and marine boating conditions:

<http://www.mysound.uconn.edu/stationstat.html>

http://marine.rutgers.edu/mrs/sat_data/?nothumbs=1

<http://www.ndbc.noaa.gov/>

<http://www.wunderground.com/MAR/AN/330.html>

CONNECTICUT STATE BOUNDARY LINE IN LONG ISLAND SOUND. Anglers please note, although Connecticut has reciprocity with neighboring states (New York, Rhode Island, Maine and Massachusetts), residents of Connecticut are required to have a CT Resident Marine Waters Sport Fishing License to fish in the Marine District.

SHORE FISHING SPOTS & TIDE TABLE INFORMATION To find a saltwater shore fishing spot close to where you live, go to the following website: <http://www.lisrc.uconn.edu/coastalaccess/>.

For **ENHANCED OPPORTUNITY SHORE FISHING** sites and other fishing information including a site map go to the following website <http://www.depdata.ct.gov/maps/saltwaterfish/map.htm>.

Please see page 64 of the **2019 CT Fishing Guide** for CT tide information.

THE FULL MARINE REPORT WILL RETURN NEXT WEEK, BUT WE WOULD LIKE TO REMIND YOU THAT:

SCUP regulations have just changed as of 4/16/2019.

The 2019 recreational scup measures for Connecticut are:

- Open season year-round (effective 4/16/2019)
- Minimum size: 9 inches
- Creel limit: 30 fish
- For paying passengers on registered party or charter fishing vessels:
- Bonus season: September 1 – October 31
- Minimum size: 9 inches
- Creel Limit: 50 fish
- For shore anglers fishing at Enhanced Shore Opportunity Sites:
- Minimum size: 8 inches

For Current Connecticut Recreational Fishing Regulations: Anglers should consult the 2019 Connecticut Fishing Guide which is now available at most Town Clerks Offices, DEEP offices and at tackle stores selling fishing licenses. Current regulations, electronic versions of the Fishing Guide and additional information can all be accessed on the DEEP website at: www.ct.gov/deep/fishing.

DEEP WEEKLY Fishing Report



Connecticut Department of
ENERGY & ENVIRONMENTAL PROTECTION

79 Elm Street, Hartford, CT 06106

www.ct.gov/deep