

**CT DEEP** **2019**  
**FISHING REPORT NUMBER 25**  
**10/3/2019**



Chain Pickerel (*Esox niger*)



YOU CAN FIND US DIRECTLY ON FACEBOOK. This page features a variety of information on fishing, hunting, and wildlife watching in Connecticut. The address is [www.facebook.com/CTFishandWildlife](http://www.facebook.com/CTFishandWildlife).

**SHARE THE EXPERIENCE**  
Take someone fishing

## INLAND REPORT

Stay in the know with CT Fish and Fishing Facebook Posts (@[CTFISHANDWILDLIFE](https://www.facebook.com/CTFISHANDWILDLIFE)). [Opt in](#) to the Monthly E-newsletter *CT Fishin' Tips*.

Providers of some of the information in this report included **Candlewood Bait & Tackle**, **Captain Morgan's Bait & Tackle**, **JT's Fly Shop**, **The Fish Connection**, **Yankee Outdoors**, **CTFisherman.com**, and a number of bass fishing clubs & organizations.

**LARGEMOUTH BASS** fishing has been slow to fair at many areas throughout the state, as roller coaster temperatures have surface waters still warm and some fish in transition from summer to fall habits and some still stuck in summer. The forecast for the next week or more is definitely for fall weather so perhaps action will pick up some. Most recent reports from Lake Lillinonah were much better, and catches included a 5.7 lb largemouth and fishing is beginning to pick up at Candlewood Lake. Places such as Quonnipaug Lake, Pachaug Pond, East Twin Lake and Bantam Lake are also producing some fish.

**Tournament angler** reports are from Bashan Lake (slow for most, 1.94 lb lunker), Coventry Lake (slow to fair, 3.15 lb lunker), Mansfield Hollow Reservoir (fair at best, no size and only a 1.50 lb lunker), Pattagansett Lake (fair, but no size, 1.94 lb lunker), Candlewood Lake (slow to fair, with a 4.78 lb lunker;), East Twin Lake (tough for some, good for others, **7.19 lb lunker**), Highland Lake (slow to fair, 4.46 lb and 3.28 lb lunkers), Lake Housatonic (tough, 5.14 lb lunker) and the Connecticut River (very tough, 3.5 lb lunker).

### Calling All Trout & Salmon Anglers!

We will be hosting a series of town hall style meetings to discuss your preferences and desires related to trout and salmon fishing. Stay tuned for additional details, but for now **save a date**.

- 10/5 (Saturday) DEEP's Quinebaug Valley State Trout Hatchery from **FULL****
- 10/7 (Monday) DEEP's Sessions Woods Wildlife Management Area, Burlington, from 7-9 pm. [RSVP](#)**
- 10/10 (Thursday) Connecticut Forest and Park Association Headquarters, Middlefield, from 7-9 pm [RSVP](#)**
- 10/18 (Friday) DEEP's Quinebaug Valley State Trout Hatchery from 7-9 pm [RSVP](#)**
- 10/21 (Monday) DEEP's Kellogg Environmental Center, Derby, from 7-9 pm [RSVP](#)**
- 10/22 (Tuesday) DEEP's Franklin Swamp Wildlife Management Area, Franklin, from 7-9 pm [RSVP](#)**



**SMALLMOUTH BASS.** Anglers are finding some smallmouth at Candlewood Lake and Lake Lillinonah but it's still on the tough side for some. Little action reported from the Enfield area on the Connecticut River. **Tournament angler** reports are from Candlewood Lake (slow to fair, 4.29 lb lunker) and Coventry Lake (a couple caught).

**TROUT-STOCKING.** Looks like we may have turned the corner on warm air temperatures, which will allow our waters to "cool" off. Last week low flows in many rivers & streams and elevated water temperatures in many lakes & ponds began limiting DEEP's trout stocking efforts with only a few areas stocked and we were able to stock a few more locations this week.

**Rivers & Streams.** The **Shetucket River** (550 12" and up Rainbow Trout & 450 9-12 inch Rainbow Trout) was stocked.

**Trout Parks:** The **Valley Falls Park Pond** (400 12" and up Rainbow Trout) and **Natchaug River** (400 9-12 inch Rainbow Trout) Trout Parks were stocked.

**Note:** We are not allowed by state statute to release most stocking information ahead of time, however, as soon as we stock we get the word out via our [Facebook page](#) and have a list on our [web page](#). A very popular application is our [interactive trout stocking map](#), which shows the number of days since a waterbody was last stocked. A second popular use of this map is to find new places to fish.

**TROUT- RIVERS & STREAMS.** Most rivers and streams in CT continue to have flows at or below levels (sometimes well below) for early October although recent sporadic and spotty rain and showers have briefly refreshed some areas (*see stream flow graphic on page 5 or check stream flows anytime for 68 USGS gauging stations at the [USGS web site](#)*).

**Farmington River** – Fishing remains largely unchanged from the past several weeks and is considered good to very good. Conditions for the weekend and next week should also be near ideal for fall fishing. Flows are clear, continue to be somewhat low (although there was a small increase in the Still River from this week's rain), currently 109 CFS at Riverton plus 20 CFS from the Still River and very comfortable for fishing. Anglers should expect flows to slowly decrease from their current level as the drawing down of West Branch Reservoir to facilitate Colebrook River Lake dam maintenance continues (*see Notes section on page 5 for more information on this project*).

**Hatches/patterns** Evening hatches are sporadic and can include *Isonychia bicolor* (#12-14, fast water, afternoon/evening), Blue Wing Olives (*Drunella* & *Baetis* spp., #20-26, mid-late afternoon), Caddis (tan #16-18, all day; green #22-26, evening; summer pupa #18-20 morning). Also Midges (#22-32, morning) and Golden Stonefly (#6-14). White Woolly Buggers, Muddlers, Micky Finn, or Grey or Black Ghosts (#4-10) are standard streamers. Bottom bouncing nymphs with Caddis pupa (#14-16), Serendipity (#14-16), Prince (#6-18) and Hare's ear (#8-20) works well.

**Paddlers be advised** wearing a life jacket is mandatory from October 1<sup>st</sup> until May 31<sup>st</sup>. Please see helpful maintenance tips from Captain Keith Williams of the CT EnCon Police on our [Facebook Page](#).



**Housatonic River** – The River continues to be very wadeable and fishable, and fishing has been good to very good. Note that the water is super clear and although flows have come up a bit this week they remain below typical levels for early October (currently 238 CFS at Falls Village and 299 CFS at Gaylordsville. Anglers should plan accordingly in their gear selection for these conditions. Look to fish areas connected to deep pools as river flows are not offering much in the way of cover in the riffles and runs. Anglers can call the **FirstLight Power Resources flow line at 1-888-417-4837 for updated river information or check the [USGS website](#)** for up to date real time streamflow data from a number of USGS gauging stations including two on the upper Housatonic River.

**Hatches/patterns.** Lots of different activity on the river. Key is to have a diverse box of sizes and colors. Patterns to try include Blue Wing Olive (#18-24, early morning; spinner fall in evening), Isonychia (#10-12 evening), Midges (#20-24) and Black caddis (#14-18, early morning & evening) and Light Cahill (#12-14). Also try terrestrial patterns such as Black Beetles (#14-18, midday), Stone Hopper (#8-10, midday) and Flying Ants (#16-18, midday, when windy). Patterns to try include White Zonkers, Woolly Buggers, Muddlers, Grey or Black Ghosts (#4-10), brown crayfish when nymphing the pockets, deeper riffles and pool heads.

**TROUT- LAKES & PONDS** – No reports for trout again this week. Crystal Lake, East Twin Lake and West Hill Pond may provide some sparse and limited action. Some reports of Kokanee Salmon on East Twin beginning to change into spawning mode.

**CHANNEL CATFISH.** The more productive areas include the CT River (evenings/nights best, but cats are being found throughout the day), Batterson Park Pond, Mohegan Park Pond, Wauregan Reservoir, Crescent Lake (Southington), Lake Wintergreen, and Beardsley Park Pond. Some cats are also be found at Lake Quonnipaug. Other places to try include Stillwater Pond, Burr Pond, Silver Lake, Hopeville Pond, and Black Pond. **Please note that the Fisheries Division has nets set in Burr Pond and Lake Kenosia in order to collect catfish for a population estimate. Please do not disturb these nets (marked by large orange floats).**

**COMMON CARP.** Try south of Middletown in the CT River and the coves for some nice fall carp (some good reports from here). Other carp favorite waters include Lake Zoar, Candlewood Lake, the upper Housatonic River, Batterson Park Pond, and West Thompson Reservoir. Pre-Bait your area to bring in plenty of hungry carp.

**NORTHERN PIKE.** Some pike reported from the CT River (fairly good action in the Haddam area on mostly smaller fish). The Pachaug River system (Ashland Pond, Hopeville Pond, Pachaug Pond), Bantam Lake, Lake Lillinonah, Lake Zoar, Winchester Lake and Mansfield Hollow Reservoir are also all good places for pike. Some nice pike can also be found in the small impoundments on the Housatonic River from Bulls Bridge up to Salisbury.

**PANFISH.** Good time of year to go to your favorite pond and load up on bluegill and perch. It's great for families and will get kids hooked on fishing. Fly-fishing with small poppers will provide some great catches. Some good sunnie action can be found statewide. Black Crappie are also providing some action across the state (also good reports from Black Pond, Woodstock), try small shiners or suspending poppers to catch a few. Looking for a new place to fish? Check out our [interactive mapping application](#).



**ZEBRA MUSSELS REMINDER**

**Zebra mussels are now found in a number of locations scattered throughout the Housatonic River and its impoundments including Lake Lillinonah (since 2010), Lake Zoar (since 2010) and Lake Housatonic (since 2011).**

Prior to their discovery in Lakes Lillinonah and Zoar in 2010, zebra mussels had been found (1998) in CT only in East Twin Lake and West Twin Lake (Salisbury). Anglers fishing in any of these waters and western Connecticut in general **should use extra care to avoid transporting water, aquatic vegetation, and possibly zebra mussels to new locations.** Information

For more information including precautions that should be taken to prevent the spread of zebra mussels to additional waters, visit [www.ct.gov/deep/invasivespecies](http://www.ct.gov/deep/invasivespecies) or the Aquatic Invasive species section of the 2018 CT angler's Guide ([www.ct.gov/deep/anglersguide](http://www.ct.gov/deep/anglersguide)).

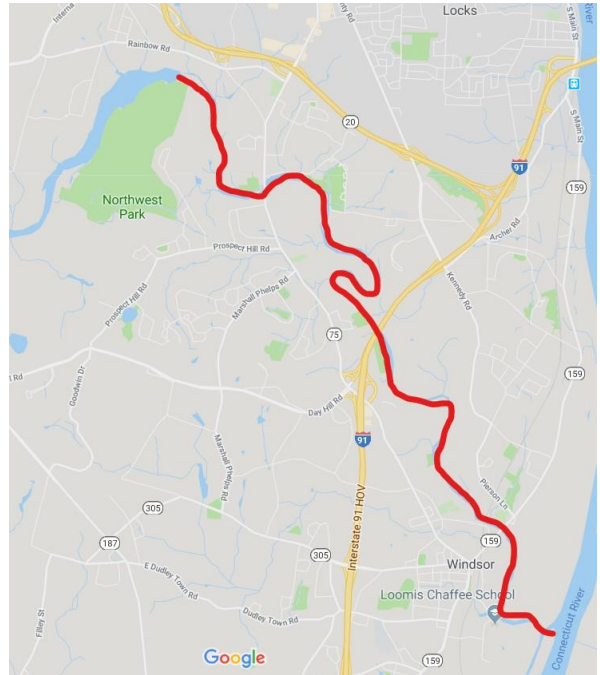
**WALLEYE.** Late evening and nighttime is generally the best for Walleye fishing. Places to try include Beach Pond, Coventry Lake, Gardner Lake, Mashapaug Lake, Mount Tom Pond, Saugatuck Reservoir, Squantz Pond, Lake Saltonstall and Batterson Park Pond.

**CHAIN PICKEREL.** September pickerel action remains fairly good.

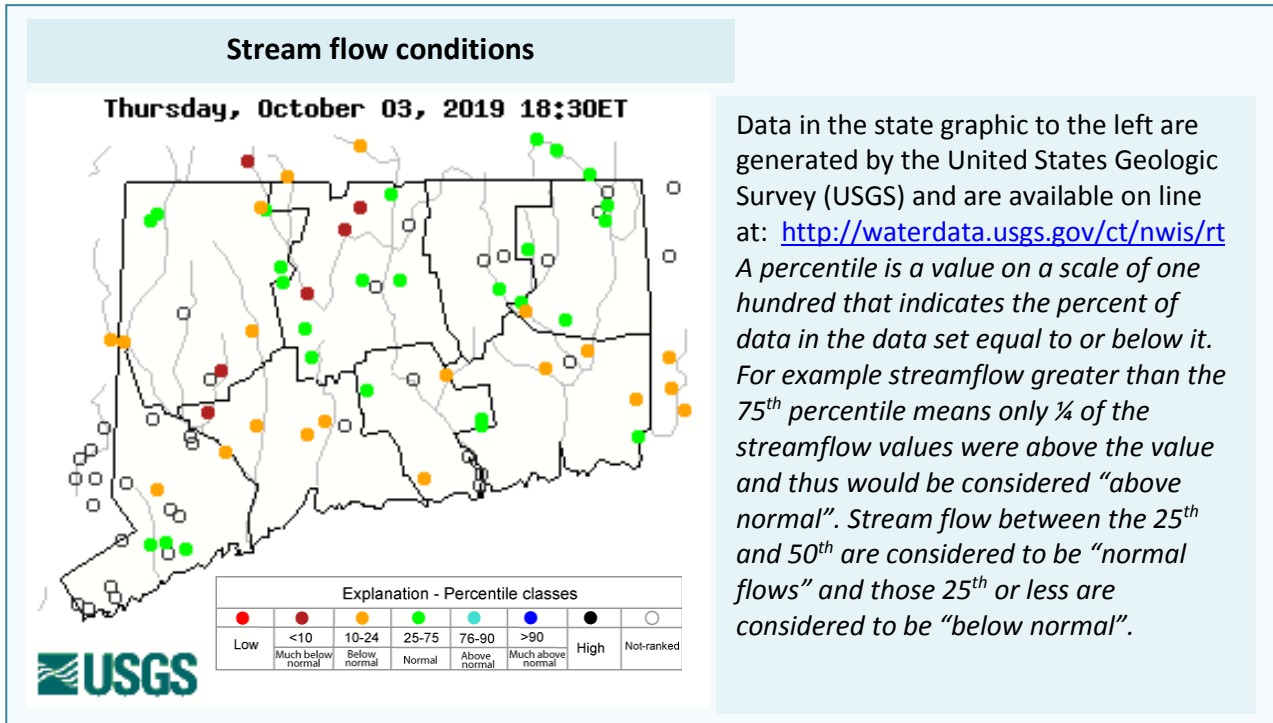
**CONNECTICUT RIVER.** Flows in the river are beginning to increase a bit (currently 9,060 CFS at Thompsonville), and improving the ability to fish and boat many areas. Good action for **catfish** (Whites and Channels) throughout the river, especially in the Glastonbury and Middletown areas. For catfish, fish the deep holes by day and the adjacent shallow flats by night. Fishing for **Largemouth Bass** was very slow in the Salmon River Cove/Haddam Meadows area. **Smallmouth Bass** were hard to find in the Enfield area and some decent **Common Carp** action is being found throughout the river. Good reports for **Northern Pike** (but mostly smaller fish) from the Haddam area.

**REVISED IMPORTANT NOTICE - Updated 10/2/2019** - Please note that an accidental release of fire-fighting foam from a hangar at Bradley International Airport on June 9 resulted in an advisory to **not eat fish caught from the Lower Farmington River (downstream of Poquonock Avenue in Windsor (Rte. 75))**, which remains in effect until further testing is completed and results analyzed.

**This advisory is now revised** to address the potential discharge on October 2, 2019 of firefighting foam into the Farmington River in Windsor originating from the Bradley International Airport plane crash emergency response efforts via Rainbow Brook. **The public is advised to not come into contact with foam they may encounter on the lower Farmington River or along its banks downstream of the Rainbow Dam, as well to not take or consume fish from this section of the river.** This advisory will remain in place while officials evaluate the potential impacts to the watershed.



*Section of the lower Farmington River possibly affected by the firefighting foam release in early June as well as emergency use of the foam during the plane crash response on October 2, the area remains under a cautionary advisory.*



**NOTES & NOTICES:**

**EEE UPDATE from DEEP’s Mosquito Management Program: ATTENTION Hunters, Anglers, and Hikers -**

Residents, especially those in the southeastern part of the state from the lower Connecticut River Valley to the Rhode Island border, are advised to protect themselves and their children by taking personal precautions to prevent mosquito bites until the first hard frost of the fall. Consideration should also be given to minimizing outdoor activity from dusk to dawn, when mosquitoes are most active. The Department of Public Health announced on Oct. 1, 2019, that a third person has died this year in CT from Eastern Equine Encephalitis (EEE) and a fourth person remains hospitalized due to EEE ([Press release with more details](#)). Weekly surveillance updates of mosquito and virus activity, precautionary and control methods, and the current list of certified applicators can be found at <https://portal.ct.gov/mosquito>.

**ASPINOOK POND (drawdown).** A 30-inch drawdown of Aspinook Pond to facilitate dam maintenance was scheduled to begin this past Monday (September 23). The drawdown is expected to last approximately one week.

**COLEBROOK RIVER LAKE (boat launch) - UPDATE.** Water levels have risen sufficiently for the regular boat launch at Colebrook River Lake to reopen and the launch is now open to use by the public. Boaters can call the U.S. Army Corps of Engineers (USACE) at 860-379-8234 for updated information.

**WEST BRANCH RESERVOIR, WEST BRANCH FARMINGTON RIVER & COLEBROOK RIVER LAKE.** The water level in West Branch Reservoir is being lowered 70 feet from its usual elevation by MDC at a rate of no more than two feet a day. This will result in a minor increase in flows in the West Branch Farmington and Farmington rivers independent of any rain events. This increase will decrease over time as the reservoir drops. It is expected that lowering the reservoir to the necessary level will be completed by October 14.

Once the desired level is reached repairs will begin and are anticipated to last two to three months. During this period flows in the West Branch Farmington River are expected to stay within typical levels dependent on precipitation amounts and water level manipulations of impoundments (especially Otis Reservoir) upstream of

Colebrook River Lake and impoundments (such as Highland Lake) on tributaries. Recreational opportunities at Colebrook River Lake should be unaffected but will be severely limited at West Branch Reservoir during the repair project and drawdown.

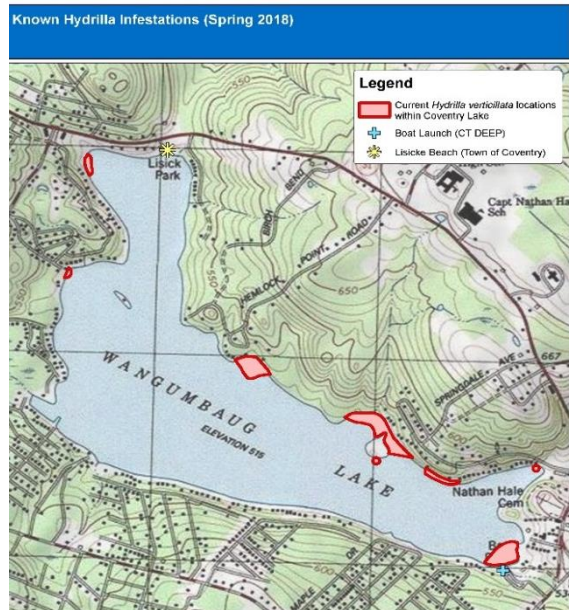
Once the repairs to the Colebrook River Lake dam infrastructure are completed, refill of West Branch Reservoir is expected to take approximately 35 days. Downstream flows during this time are expected to stay within typical levels during refill.

**CONNECTICUT RIVER (Glastonbury).** The *“Head of the Tomahawk” rowing regatta* will be held on Saturday, September 28 (approximately 7 am – 1 pm) on the CT River in East Hartford/Glastonbury from approximately ½ mile downstream of the Charter Oak Bridge to the Glastonbury Boat House. Boat travel through the course area will be congested during the race events, use extra caution.

**CONNECTICUT RIVER (invasive species alert).** In 2016 hydrilla was found in the main stem Connecticut River in Glastonbury (near Glastonbury’s Riverfront Park & Boathouse). **Hydrilla has now spread throughout the river and can be found in numerous areas.** See the Coventry Lake entry on the next page for what river users should do to prevent spread of this invasive plant to other waterbodies.

**COVENTRY LAKE (invasive species alert).** Hydrilla, a very highly invasive aquatic plant, has been found growing in Coventry Lake. All lake users should take extra care to check and clean their boats (including canoes, kayaks and rowing sculls), trailers, and fishing equipment before leaving the launch.

**STANLEY QUARTER PARK POND (drawdown).** A 2-3 foot drawdown for dam repairs continues. Accessing the water may be limited.

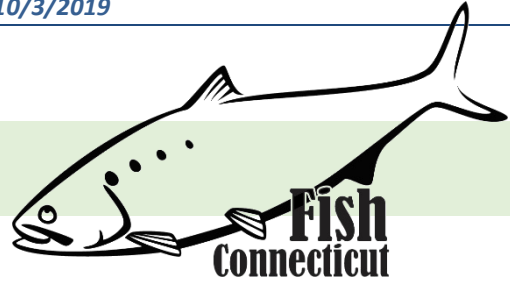


Known locations of hydrilla at Coventry Lake (Wangumbaug Lake). Boaters should avoid these areas noted with red to avoid fragmenting and spreading hydrilla.

**For Current Connecticut Recreational Fishing Regulations:** Anglers should consult the 2019 Connecticut Fishing Guide which is now available at most Town Clerks Offices, DEEP offices and at tackle stores selling fishing licenses. Current regulations, electronic versions of the Fishing Guide and additional information can all be accessed on the DEEP website at: [www.ct.gov/deep/fishing](http://www.ct.gov/deep/fishing).

The Connecticut Department of Energy and Environmental Protection is an Affirmative Action/Equal Opportunity Employer that is committed to complying with the requirements of the Americans with Disabilities Act. Please contact us at (860) 418-5910 or [deep.accommodations@ct.gov](mailto:deep.accommodations@ct.gov) if you have a disability and need a communication aid or service; have limited proficiency in English and may need information in another language; or if you wish to file an ADA or Title VI discrimination complaint.

## MARINE FISHING REPORT



Surface water temperatures in Long Island Sound (LIS) are in the low 60's °F. Check out the following web sites for more detailed water temperatures and marine boating conditions:

<http://www.mysound.uconn.edu/stationstat.html>

[http://marine.rutgers.edu/mrs/sat\\_data/?nothumbs=1](http://marine.rutgers.edu/mrs/sat_data/?nothumbs=1)

<http://www.ndbc.noaa.gov/>

<http://www.wunderground.com/MAR/AN/330.html>

---

**NOTE ON TAUTOG SURVEY:** Some of you may have recently become aware of an online survey being conducted by researchers at UConn and CT Sea Grant concerning tautog recreational fishing regulations in Long Island Sound. While CT DEEP supports this research project and encourages CT anglers to participate, **we would like to assure anglers that there are no plans to change tautog regulations in the near future.** Current regulations will remain in place until the Atlantic States Marine Fisheries Commission conducts its next tautog stock assessment (currently scheduled for 2021). If you have questions about the survey, or would like to take the survey, please contact Eric Schultz at [eric.schultz@uconn.edu](mailto:eric.schultz@uconn.edu)

### Public Input Wanted regarding Striped Bass (Deadline October 7):

---

The DEEP Marine Fisheries Program hosted two public hearings of the Atlantic States Marine Fisheries Commission to gather input on Draft Addendum VI to the Interstate Fishery Management Plan for Striped Bass. Draft Addendum VI was initiated in response to the 2018 Benchmark Stock Assessment, which indicates the resource is overfished and experiencing overfishing. The Draft Addendum explores a range of management alternatives designed to end overfishing and reduce fishing mortality to the target level in 2020. Get more details [here](#).

If you could not or did not attend one of the public meetings and would like to have formal comment- Fishermen and other stakeholders are encouraged to provide input on Draft Addendum VI either by attending one of the public hearings or providing written comment. **Public comment will be accepted until 5 PM (EST) on October 7, 2019** and should be sent to Max Appelman, Fishery Management Plan Coordinator, 1050 N. Highland St, Suite A-N, Arlington, VA 22201; 703.842.0741 (FAX) or at [comments@asmfc.org](mailto:comments@asmfc.org) (Subject line: Striped Bass Draft Addendum VI). Additional details [here](#).

---

### IMPORTANT REMINDERS for ANGLERS:

- **SEE A TANGLED TURTLE? CALL THE HOTLINE! 1-860-572-5955 ext. 107.** This is the time of year when leatherback, loggerhead, green, and Kemp's Ridley sea turtles return to northern waters, with many sightings around Long Island Sound.
- **NORTHERN DIAMONDBACK TERRAPIN TURTLE** – Many shore anglers fishing in the lower Connecticut and Housatonic Rivers and other estuaries are encountering these beautiful brackish water turtles while fishing. They will frequently feed on fishermen's live or dead bait when bottom fishing. They are a protected species with very low abundance. Please take great care (use needle nose pliers) when removing the hook and release the turtle without avoidable harm. Terrapins have a long lifespan of about 25 to 40 years. Thank you for supporting conservation!

**ATLANTIC BONITO, LITTLE TUNNY & SPANISH MACKEREL** fishing is sporadic. With a week of stable weather and little wind, fishing is going to be better for these species, especially with all the bait around. Please be respectful of other boat anglers and refrain from the run and gun type of fishing, chasing them all around...which only makes these fish become line shy and near impossible to catch. Try fishing the Race, **Niantic Bay**, Jordan Cove, Sunken Island, Middleground, **Norwalk Islands**, South Benson Pier, Stratford Shoal, Eaton's Neck, Cockenoe Shoal and Sasco Beach. These lightning fast fish are so quick and schools move so fast, that it's best to grab a pair of binoculars and watch for birds above feeding on leftover bait. Calm seas also help in locating them. This week's hot baits to try have been...Deadly Dicks, Sluggos (4"-7"), Castmasters, 7/8 ounce **Hogy Epoxy Jig** (olive color) and Albie Snacks (amber color). To improve your chances use a fluorocarbon leader and no swivel. Although false albacore are poor for eating - just catching one will give you such a fight you will be bragging about it for weeks. There's a good chance your local party boat will run into a few schools treating customers with a great day of fishing.

**STRIPED BASS** fishing is fantastic. **It's time for shore anglers to hit the SURF...locate your favorite coastal state park(s)**. The fall season appears to be starting off strong, with many charter boat operators commenting on how many bass there are. These bass are migrating and feeding heavily on all the bait. The best thing is...you catch them during the daytime, especially during overcast skies. Trolling weighted jigs (chartreuse) with a yellow pork rind and or live lining bunker (Atlantic menhaden) in 15 to 40 feet of water. I like dunking a live **eel on the reefs/shoal areas** during the late afternoon /evening hours. This technique has produces some very big bass recently (51 inches – 48 pounds, (Outer Bartlett Reef & Norwalk Islands). Striper spots include the Watch Hill reefs, Ram Island Reef in Fishers Island Sound, lower Mystic and Thames River, the Race, Sluiceway, **Plum Gut**, Pigeon Rip, outer Bartlett Reef, Black Point, the "humps" south of Hatchett Reef, **lower Connecticut River**, Long Sand Shoal, Cornfield Point, Southwest Reef (outer), Sixmile Reef, Falkner Island area, the reefs off Branford, New Haven Harbor (breakwalls) and the upper reaches, **Charles Island area**, lower Housatonic River, buoys 18 and 20 off Stratford Point, **Stratford Shoal/Middle Ground**, Milford Point, Penfield Reef, around the Norwalk Islands, and Cable and Anchor Reef.

**BLACK SEA BASS & SCUP** fishing is still phenomenal. I would recommend to get out while the weather is good, these excellent eating fish won't be hanging around too much longer. Double your chances by using a high-low rig tipped with clams and/or squid. Once you get a bite make sure to set the hook and whether releasing or keeping, be careful of the spines. We highly recommend heavy chumming; although you don't need to feed the entire ocean - chumming really gets black sea bass and scup in a feeding frenzy. Great porgy fishing places this week are: **Buoy 32A, Hens & Chickens near Captains Harbor in Greenwich, Fort Nathan Hale Beach (pier under construction), Pleasure Beach Family Pier, Short and Long Beach in Stratford and Silver Sands State Park in Milford**, South Benson Pier, Ash Creek, Saint Marys by the Sea, Seaside Park, Fayerweather Island, Sherwood Island State Park, Calf Pasture Beach Pier, Cummings Park, Shippan Point and Todds Point on the southwest side facing New York skyline. Try your luck at one of CT's wonderful Enhanced Opportunity Shore Fishing sites where the length limit for porgy (scup) is 9" as opposed to non-enhanced sites which have the standard 10" length limit. List of some very accessible shore fishing locations are: Calf Pasture beach, Jennings and Penfield beach, Seaside Park, (Milford), Bradley Point Park (West Haven), New Haven, **Harkness State Park**, Rocky Neck State Park, **Kimberley Reef (Guilford)**, Meigs Point Hammonasset State Park and **Fort Trumbull State Park**. Locate your favorite [Enhanced Shore Fishing Opportunities](#) for these hard fighting and excellent eating "Reef Slammers". Contact your [local bait and tackle shop](#) for updated fishing information.

**BLUEFISH.** The "blitz" is on, bluefish schools (harbor blue sized) are mixed with striped bass are reigning supreme. **Jennings Beach, Walnut Beach, mouth of the Housatonic, Greens Ledge Lighthouse, Middle-ground (especially Stratford Shoal Lighthouse), The Cows, Sunken Island, the Norwalk Islands, Penfield Reef, Todds Point, mouth of Rowaytons Five Mile River, Fish Island in Darien, Sasco Beach, Sandy Point, Black Rock Harbor and Gulf Beach Pier and Gulf Beach Break-wall** are all excellent striped bass and bluefish locales. As



for bluefish bait, well you could probably could put a taco on your hook and catch one because they are voracious eaters. But Atlantic mackerel and bunker (Atlantic menhaden) are good bait choices.

**TAUTOG. REMINDER TO ANGLERS: TAUTOG (BLACKFISH) SEASON OPENS OCTOBER 10TH!**

Any of the rocky reefs, rock piles, and wrecks in Long Island Sound will hold tog. Green, Asian shore or hermit crabs all work. Consider putting the crab (bait) on a jig (1/4 to 1 ounce). It will be a shallow water bite (6-30 feet) this early in the season. I would highly recommend planning a trip on a [party/charter boat](#) trip to fish for tautog. As you prepare for the season here are two quick tips; if you dunk a green/Asian shore or hermit crab in the water, and there is a tautog there - you will get a hit. Jigs tipped with a crab is an awesome technique for tautogs hanging tight to the reef. If you're not getting hits, you're fishing in a site void of blackfish, so move to another location (reef). Also try chumming to attract fish. The three break-walls at the entrance to New Haven Harbor sometimes hold very large blackfish. So enjoy the season, be safe and **TIGHT LINES!**

**HICKORY SHAD** fishing is fair in the Black Hall River/Lieutenant River (out-going tide), Housatonic River and the lower Connecticut River (DEEP Marine Headquarters fishing pier). Fishing remains good at Fort Trumbull, Black Hall, Clinton Harbor River systems.

**BLUE CRAB** fishing is fair at best. **Remember...all egg bearing females must be released without avoidable injury. Minimum carapace length is 5 inches for a hard shell crab.** Legal gear types include: scoop (dip) net, hand line, star crab trap, circular (topless) trap not exceeding 26 inches in diameter. Maryland Style Crab traps are prohibited and it's illegal to snag blue crabs. **Chicken with the skin on it (along with a long handle net) is the preferred method to capture these tasty crabs.** [Blue Crab Fact Sheet](#)

**SHARK SPECIES YOU MAY ENCOUNTER IN COASTAL WATERS OF CONNECTICUT -** Anglers may catch Sand Tiger and Sandbar (Brown) Shark which are protected and prohibited species and must be released unharmed. **IF YOU DON'T KNOW, PLEASE LET IT GO!** [Coastal shark information.](#)

**NOTABLE CATCHES**

Species	Length (in.)	Weight (lbs)	Angler
Snake Mackerel	28"	C&R	Alex Erdmann
Summer Flounder	25"	6 lbs 7 ozs	Alex Erdmann
Summer Flounder	28"	C&R	Tobey Sweet
Scup	18"	3 lbs	Laura Macha

**CAUGHT A TROPHY FISH – CLICK HERE FOR THE MARINE TROPHY FISH AWARD PROGRAM AFFIDAVIT**

- **CONNECTICUT STATE BOUNDARY LINE IN LONG ISLAND SOUND.** Anglers please note, although Connecticut has reciprocity with neighboring states (New York, Rhode Island, Maine and Massachusetts), residents of Connecticut are required to have a CT Resident Marine Waters Sport Fishing License to fish in the Marine District.
- **CT TIDE INFORMATION** can be found on page 64 of the [2019 CT Fishing Guide](#).
- **FISH RULES APP** Fish Rules is a totally new and innovative way to understand recreational saltwater fishing regulations for state and federal waters from Maine to Texas.

**DEEP WEEKLY Fishing Report**



Connecticut Department of  
**ENERGY & ENVIRONMENTAL PROTECTION**

79 Elm Street, Hartford, CT 06106

[www.ct.gov/deep](http://www.ct.gov/deep)